



PN 10/16 - DN 50...600

KAT-A 5021

Product characteristics and benefits

- Designed to join pipes of various outside diameters with the same or different nominal bore
- Wide range tolerance on OD (up to 23mm)
- Can connect steel, ductile iron, UPVC, cast iron, asbestos cement and other rigid pipe materials

Materials

- Sleeve: DN 50...300 rolled steel, DN 350...600 ductile iron EN-GJS 400-15 (GGG-40)
- End rings: Ductile iron EN-GJS 400-15 (GGG-40)
- Seals: EPDM
- Threaded anchor bolts: 4.8 electro galvanized

Corrosion protection

- Internally and externally epoxy coated

Versions

- With 316 stainless-steel anchor bolts
- NBR and other sealing materials on request

Field of application

- Underground installation
- Chamber installation
- Installation in plants



Tests and approvals

- WRAS tested and registered
- Certified non toxic elastomers and coatings for use on potable water distribution systems in accordance with BS 6920 (WRAS approved)
- Manufactured in accordance with AWWA C 219

Note

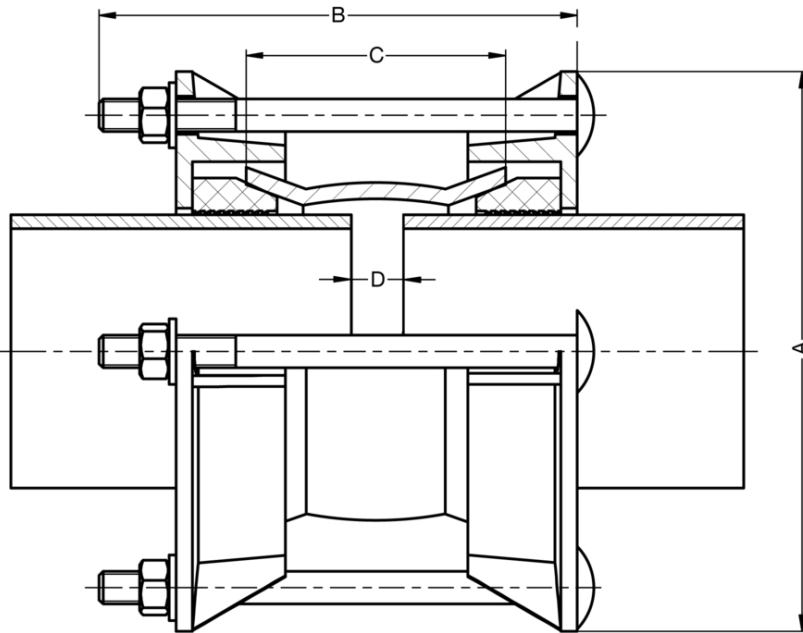
For proper installation and safe operation please follow the installation and operation instructions:
"Installation and Operating Instructions for Valves"

Field of application

DN	PN	Maximum operating pressure [bar]	Maximum operating temperature for neutral liquids [°C]
50...600	10	10	60
50...600	16	16	60



Drawing



Technical data

PN 10

DN	50	65	80	100	125	150	150	175	200	225	225	250
OD Range [mm]	59-72	72-85	88-103	109-128	138-153	150-170	159-182	192-210	218-235	230-247	242-262	250-267
A [mm]	165	175	200	228	247	260	275	311	335	360	350	376
B [mm]	175	175	175	175	175	175	200	220	220	220	210	220
C [mm]	95	95	95	100	100	100	115	130	130	130	130	130
D Recommen- det setting gap [mm]	14	19	19	19	19	19	19	19	19	19	19	19
Threaded anchor bolts	2x M12x175	2x M12x175	4x M12x175	4x M12x175	4x M12x175	4x M12x175	4x M12x200	4x M12x220	4x M12x220	5x M12x220	6x M12x210	6x M12x220
Weight approx. [kg]	3	3	4	5	5	7	7	9	10	17	15	18

PN 10

DN	250	300	300	300	350	350	400	400	450	450	500	500
OD Range [mm]	272-289	315-332	322-340	340-360	351-378	374-391	390-410	417-437	454-460	480-500	500-508	526-546
A [mm]	445	442	455	455	490	510	570	580	600	623	650	690
B [mm]	220	220	200	220	250	220	250	250	250	260	250	250
C [mm]	130	130	105	130	150	150	150	150	150	150	150	150
D Recommen- det setting gap [mm]	19	19	19	19	38	38	38	38	38	38	38	38
Threaded anchor bolts	6x M12x220	6x M12x220	6x M12x200	6x M12x220	8x M14x250	8x M12x220	8x M14x250	8x M14x250	10x M12x250	10x M12x260	10x M14x250	10x M14x250
Weight approx. [kg]	17	24	20	22	32	33	35	26	39	33	48	35



Technical data

PN 10

DN		600	600
OD Range	[mm]	600-630	630-650
A	[mm]	790	738
B	[mm]	250	260
C	[mm]	150	150
D Recommen- det setting gap	[mm]	38	38
Threaded anchor bolts		10x M14x250	10x M12x260
Weight approx.	[kg]	72	50

PN 16

DN		50	65	80	100	125	150	150	175	200	225	225	250
OD Range	[mm]	59-72	72-85	88-103	109-128	138-153	150-170	159-182	192-210	218-235	230-247	242-262	250-267
A	[mm]	165	175	200	228	247	260	275	311	335	360	350	376
B	[mm]	175	175	175	175	175	175	200	220	220	220	210	220
C	[mm]	95	95	95	100	100	100	115	130	130	130	130	130
D Recommen- det setting gap	[mm]	14	19	19	19	19	19	19	19	19	19	19	19
Threaded anchor bolts		2x M12x175	2x M12x175	4x M12x175	4x M12x175	4x M12x175	4x M12x175	4x M12x200	4x M12x220	4x M12x220	5x M12x220	6x M12x210	6x M12x220
Weight approx.	[kg]	3	3	4	5	5	7	7	9	10	17	15	18

PN 16

DN		250	300	300	300	350	350	400	400	450	450	500	500
OD Range	[mm]	272-289	315-332	322-340	340-360	351-378	374-391	390-410	417-437	454-460	480-500	500-508	526-546
A	[mm]	445	442	455	455	490	510	570	580	600	623	650	690
B	[mm]	220	220	200	220	250	220	250	250	250	260	250	250
C	[mm]	130	130	105	130	150	150	150	150	150	150	150	150
D Recommen- det setting gap	[mm]	19	19	19	19	38	38	38	38	38	38	38	38
Threaded anchor bolts		6x M12x220	6x M12x220	6x M12x200	6x M12x220	8x M14x250	8x M12x220	8x M14x250	8x M14x250	10x M12x250	10x M12x260	10x M14x250	10x M14x250
Weight approx.	[kg]	17	24	20	22	32	33	35	26	39	33	48	35

PN 16

DN		600	600
OD Range	[mm]	600-630	630-650
A	[mm]	790	738
B	[mm]	250	260
C	[mm]	150	150
D Recommen- det setting gap	[mm]	38	38
Threaded anchor bolts		10x M14x250	10x M12x260
Weight approx.	[kg]	72	50