


**Size BxH 150x150...1000x1000**

KAT-A 2453-C

**Product characteristics and benefits**

- Four side sealing
- Tightness: max. 1% (on seating pressure) and max. 5% (off seating pressure) of leakage rate acc. to DIN 19569 Part 4 in installed state
- Compact valve with self-contained frame design for wall mounting with anchors
- Non-rising stem
- Rotatable stem nut
- Vibration-free guiding of the gate over the entire travel; can be used in intermediate positions as control valve
- Integrated and chambered profiled seal
- Seal between valve and wall mounted to the valve and ready for operation
- Sliding system between gate and frame
- Sturdy welded structure; components dip pickled and passivated
- Square opening for wall mounting with anchors

**Materials**

- Frame: Stainless steel A2
- Sealing system: Wastewater resistant and UV-resistant EPDM
- Knife: Stainless steel A2
- Stem: Stainless steel 1.4057
- Stem nut: Zinc-free bronze (wastewater resistant)

**Corrosion protection**

- All stainless steel parts: Dip pickled and passivated

**Versions**

- Standard version as described
- Stem thread outside the medium, open frame design
- With handwheel, electric actuator or pneumatic actuator
- Frame and knife: Stainless steel A4
- Other dimensions on request

**Field of application**

- Chamber installation
- Basin installation
- Wastewater systems


**Tests and approvals**

- Factory test report acc. to DIN EN 10204, 2.1 with indication of leakage rate

**Accessories**

- Extension spindle
- Wide range of VAG REMO remote control systems

**Note**

Flexible modular system with the VAG REMO remote control system

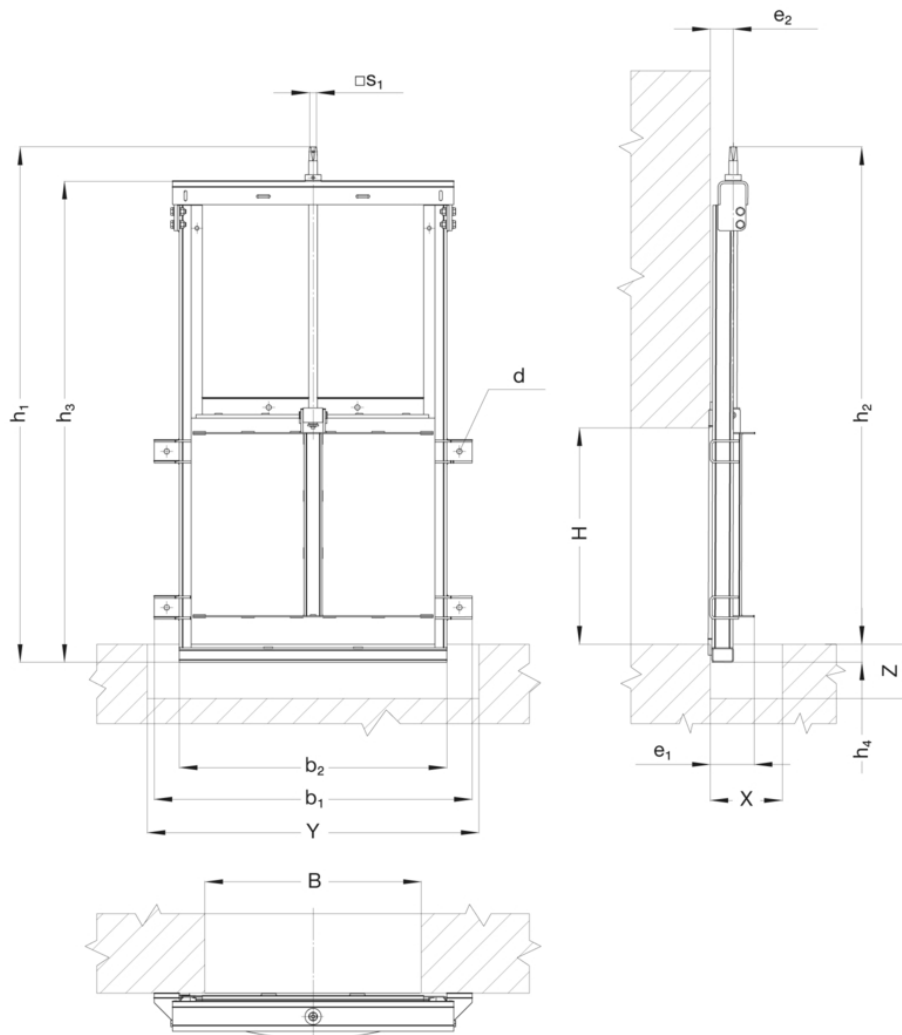
For proper installation and safe operation please follow the installation and operation instructions:  
KAT-B 2453

**Field of application**

Size [mm]	Maximum operating pressure limits on both sides [m WC]	Maximum operating temperature for neutral liquids [°C]
150x150...250x250	10	50
300	8	50
400x400...800x800	6	50
900x900...1000x1000	4	50



Drawing



Technical data

Size BxH [mm]	150x150	200x200	250x250	300x300	400x400	500x500	600x600	700x700	800x800	900x900	1000x1000
mWc	10	10	10	8	6	6	6	6	6	4	4
X (min)	200	200	200	200	200	200	200	600	600	600	600
Y (min)	450	530	580	630	730	830	930	1050	1150	1250	1350
Z [mm]	150	150	150	150	150	150	150	150	150	150	150
b1 [mm]	432	482	532	582	682	782	882	990	1090	1190	1290
b2 [mm]	292	342	392	442	542	642	742	854	954	1054	1154
e1 [mm]	103	103	103	103	103	103	122	140	155	172	170
e2 [mm]	63	63	63	63	63	63	63	65	65	65	62
h1 [mm]	538	638	739	838	1038	1233	1428	1682	1882	2082	2282
h2 [mm]	489	589	689	789	988	1184	1379	1613	1813	2013	2213
h3 [mm]	444	544	644	744	944	1139	1334	1592	1792	1992	2192
h4 [mm]	50	50	50	50	50	50	50	70	70	70	70
□ s1 [mm]	19.3	19.3	19.3	19.3	19.3	19.3	19.3	27.3	27.3	27.3	27.3
Holes (d)	14,5	14,5	14,5	14,5	14,5	14,5	14,5	14,5	14,5	14,5	14,5
Turns/stroke	30.2	40.2	50.2	60.2	80.4	100.4	120.4	117.1	133.8	150.5	167.1
Weight approx. [kg]	16.00	18.00	20.10	25.00	36.00	45.00	55.00	88.00	108.00	125.00	145.00
Volume approx. [m <sup>3</sup> ]	0.035	0.04	0.045	0.05	0.072	0.1	0.154	0.233	0.28	0.4	0.5